

Stofffarben · Fabric Colours · Stofkleuren



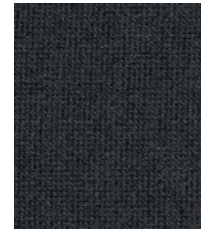
Sie haben die Wahl · It's your choice · U heeft de keuze



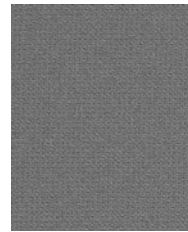
60999 (K5)  
Twist



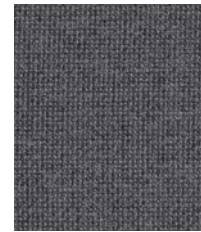
60021 (K4)  
Twist



60021 (4K)  
Twist Melange



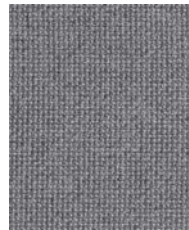
60011 (K2)  
Twist



60011 (2K)  
Twist Melange



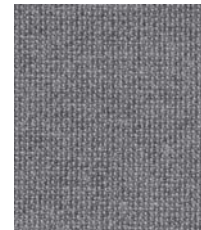
60004 (K3)  
Twist



60004 (3K)  
Twist Melange



60076 (K1)  
Twist



60076 (1K)  
Twist Melange



65018 (G3)  
Twist



65018 (3G)  
Twist Melange



66018 (G2)  
Twist



66018 (2G)  
Twist Melange



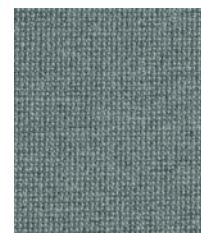
67004 (G1)  
Twist



67004 (1G)  
Twist Melange



68118 (H2)  
Twist



68118 (2H)  
Twist Melange

Einsetzbar für Programme · Applicable for programs · Van toepassing voor programma's

- ORGA-PLUS, PRISMA 2, P4 (nur Twist Melange · only Twist Melange · alleen Twist Melange), SELECT/Sitzkissen · Seat cushion · zitkissen

- TERIO PLUS (DISC, Akustiksäule - nur Twist Melange · DISC, Acoustic column - only Twist Melange · DISC, akoestische zuil - alleen Twist Melange)



68120 (H1)  
Twist



68120 (1H)  
Twist Melange



68119 (H3)  
Twist



68119 (3H)  
Twist Melange



62066 (H4)  
Twist



62066 (4H)  
Twist Melange



61104 (M1)  
Twist



61104 (1M)  
Twist Melange



61103 (M2)  
Twist



61103 (2M)  
Twist Melange



61102 (L2)  
Twist



61102 (2L)  
Twist Melange



63075 (L1)  
Twist



63075 (1L)  
Twist Melange



63012 (L3)  
Twist



63012 (3L)  
Twist Melange



64013 (L4)  
Twist




64013 (4L)  
Twist Melange



**Gabriel**<sup>®</sup>

www.gabriel.dk

## Technische Daten · Technical specifications · Specificaties

| D   | EN  | NL   |
|---|---|--|
| <b>Zusammensetzung</b><br>100% Trevira CS<br>100% frei von Schwermetallen   | <b>Composition</b><br>100% Trevira CS<br>100% free of heavy metals  | <b>Samenstelling</b><br>100% trevira CS<br>100% geen zwaar metaal  |
| Twist Melange = Akustik   | Twist Melange = Acoustics   | Twist Melange = akoestiek  |
| <b>Breite</b><br>170 cm nutzbare Breite   | <b>Width</b><br>170 cm minimum  | <b>Breedte</b><br>170 cm bruikbare breedte   |
| <b>Gewicht</b><br>370 g/lfd.M   | <b>Weight</b><br>370g/lin.m   | <b>Gewicht</b><br>370g/strekkende meter  |
| <b>Garantie</b><br>10 Jahre Garantie  | <b>Warranty</b><br>10 year warranty   | <b>Garantie</b><br>10 jaar garantie  |
| <b>Feuersicherung</b><br>BS 476 Part 7 Class 1<br><br><i>Bemerkung: Schwerentflammbarkeit hängt von verwendeten Komponenten ab.</i> | <b>Flammability</b><br>BS 476 Part 7 Class 1<br><br><i>Note: Flammability performance is dependent on components used.</i>      | <b>Ontvlambaarheid</b><br>BS 476 Part 7 Class 1<br><br><i>Opmerking: ontvlambaarheid is afhankelijk van de gebruikte componenten</i>                                   |
| <b>Lichtechtheit</b><br>5-7 (max.8 EN ISO 105 - B02)  | <b>Light Fastness</b><br>5-7 (max.8 EN ISO 105 - B02)   | <b>Lichtvastheid</b><br>5-7 (max.8 EN ISO 105 - B02)   |
| <b>Reibechtheit</b><br>Nass: 4-5, Trocken: 4-5<br>(EN ISO 105 - 12)   | <b>Fastness to Rubbing</b><br>Wet: 4-5, Dry: 4-5<br>(EN ISO 105 - 12)   | <b>Wrijftechtheid</b><br>Nat: 4-5, droog: 4-5<br>(EN ISO 105 - 12)   |
| <b>Reinigung</b><br>Regelmäßig absaugen.<br><br> | <b>Cleaning</b><br>Vacuum regularly.<br><br> | <b>Reiniging</b><br>Regelmatig stofzuigen en professioneel droogreinigen.<br><br> |
| <b>Farbabweichungen</b><br>Handelsübliche Farbabweichungen können auftreten und berechtigen nicht zur Reklamation.                  | <b>Variations in shade</b><br>Batch to batch variations in shade may occur within commercial tolerances.                        | <b>Kleurafwijkingen</b><br>Commerciële kleurafwijkingen kunnen optreden en worden als klacht niet rechtvaardigt.   |